



Bottom Direct Mounting

## Special Features

- Economical version
- General purpose application

## Application

- HVAC
- Filter-Regulator-Lubricator (FRL) Units
- Water
- Air
- Allied process industries
- Hydraulic
- Pneumatics
- Valve positioner
- Sugar mills
- Irrigation Equipment
- Boiler

## Specifications

**Standard Version : 40 mm, 50 mm, 63 mm, 100 mm, 150 mm & 250 mm**

Accuracy	:	± 2 % of F.S. ( For NS 63 mm, 100 mm, 150 mm & 250 mm ) ± 2.5% of F. S. (For NS 40 mm & 50 mm)
Ambient temperature	:	- 20°C to + 65°C
Process temperature	:	Max. 100°C
Operating pressure range	:	75% of Scale Value
Over pressure limit	:	≤ 100 bar : 125% of Max. Scale Value > 100 to ≤ 600 bar : 115% of Max. Scale Value > 600 to ≤ 1600 bar : 110% of Max. Scale Value
Case & Bezel	:	Steel, Powder coated / painted (Push Fit Type Bezel) for Dial Size 40 to 200mm Steel, Powder coated / painted (Snap Action Bayonet) for Dial Size 250mm
Bourdon	:	Copper Alloy for Range upto 600 PSI Stainless Steel for Range Above 600 PSI
Socket	:	Copper Alloy for Dial Size 40 to 150mm Stainless Steel for Dial Size 200 & 250mm
Movement	:	Copper Alloy
Joints	:	Soldering for Copper Alloy & Silver brazing for SS With Copper Alloy Argon Tig Welding for SS to SS Material
Dial	:	Aluminium, black graduation on white background
Pointer	:	Black coloured, fixed
Window	:	Sheet Glass & Poly carbonate Push Fit for NS 40 to 63mm BACK Connection

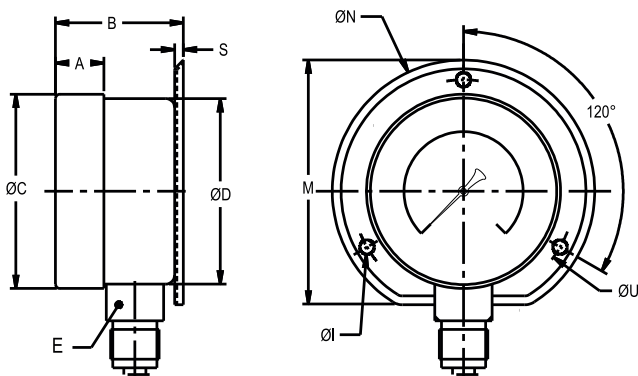
### Temperature effect :

The variation of indication caused by effects of temperature is to be calculated by below formula; which is to be added in the specified accuracy while measurement :- Formula :  $\pm 0.04 \times (t_2 - t_1) \% \text{ of F. S.}$

where  $t_1$  = reference temperature (+20°C) and  $t_2$  = ambient temperature in °C.

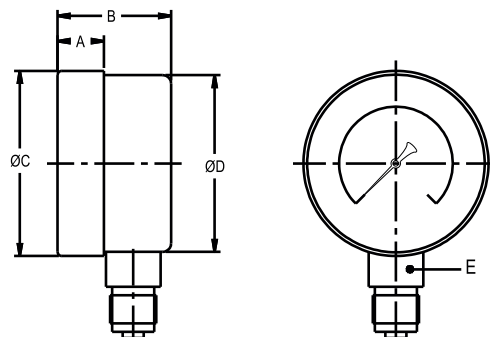
## Dimensions - Standard Version

TYPE - 1



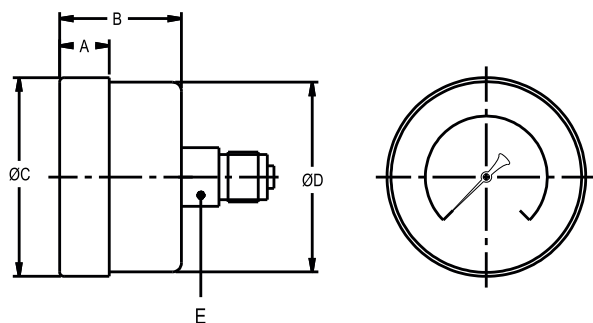
NS	A	B	ØC	ØD	E	M	S	ØN	ØU	ØI	Weight in gram (With Box)
80	13	31	80	78	17	90	4	110	95	5	250.0
100	13	39	100	98	17	124	5	134	117	6	405.0
150	16	43.5	153	152	17	183	6	198	168	-	730.0
200	24	58	204	202	22	229	7	245	230	-	1800.0
250	19	60	261	247	22	286	7	288	263	-	2300.0

TYPE - 2



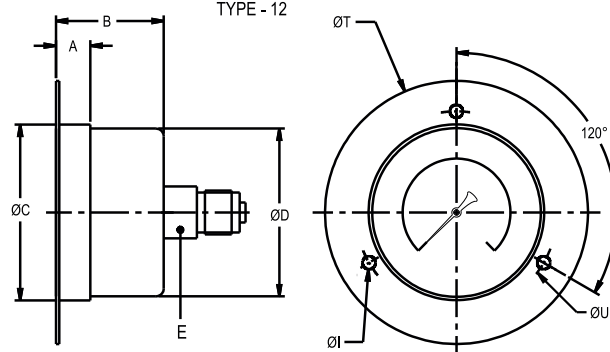
NS	A	B	ØC	ØD	E	Weight in gram (With Box)
40	-	25	42	41.5	12	82.0
50	10	30	53	51.5	14	101.0
63	11	30	63	61	14	120.0
80	13	35	80	78	17	195.0
100	13	35	100	98	17	343.0
150	16	42	153	152	17	695.0
200	24	53	204	202	22	1700.0
250	19	51	261	247	22	2100.0

TYPE - 4



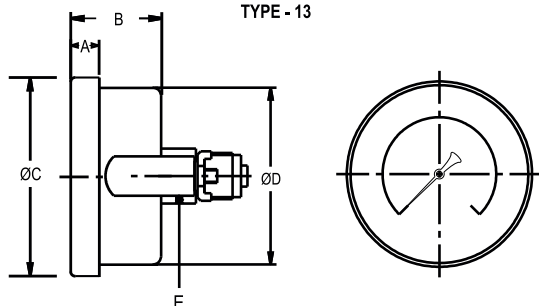
NS	A	B	ØC	ØD	E	Weight in gram (With Box)
40	-	25	42	41.5	11	69.0
50	10	30	53	51.5	14	148.0
63	11	30	63	61	14	174.0
80	13	35	80	78	17	190.0
100	13	35	100	98	17	343.0

TYPE - 12



NS	A	B	ØC	ØD	E	ØT	ØU	ØI	Weight in gram (With Box)
50	-	26	52	52	12	77	60	4	175.0
63	-	26	62	62	14	87	70	4	210.0
100	14	35	100	98	17	134	117	4	445.0

TYPE - 13



NS	A	B	ØC	ØD	E	Weight in gram (With Box)
40	5	25	49	41.5	12	80.0
50	6	31	58	51.5	14	210.0
63	7	31	69	62.5	14	240.0

Notes : • Drawings are not to scale. • All Dimensions are in mm. • NS = Nominal Size.

## Range Table

Note : We offer National / International Scales like kPa, MPa, bar, psi, kg/cm<sup>2</sup> & Dual Scale like kPa with psi, kPa with bar, bar with psi or Equivalent scales as per the requirement can be provided on request. Following are the example tables for kg/cm<sup>2</sup> & psi scales.

### Pressure

#### Single Scale (kg/cm<sup>2</sup> or bar)

0/0.6	0/4	0/25	0/160
0/1	0/6	0/40	0/250
0/1.6	0/10	0/60	0/400
0/2.5	0/16	0/100	0/600

#### Dual Scale (psi with kg/cm<sup>2</sup>)

psi	kg/cm <sup>2</sup>	psi	kg/cm <sup>2</sup>	psi	kg/cm <sup>2</sup>
0/15	0/1	0/400	0/28	0/4000	0/280
0/30	0/2	0/500	0/35	0/5000	0/350
0/60	0/4	0/600	0/40	0/6000	0/420
0/100	0/7	0/1000	0/70	0/10000	0/700
0/150	0/10	0/1500	0/100		
0/230	0/16	0/2300	0/160		
0/300	0/20	0/3000	0/200		

### Vacuum & Compound

#### Dual Scale (inHg with psi & mmHg with kg/cm<sup>2</sup>)

inHg with psi	mmHg with kg/cm <sup>2</sup>	inHg with psi	mmHg with kg/cm <sup>2</sup>	inHg with psi	mmHg with kg/cm <sup>2</sup>
- 30/0	- 760/0	- 30/60	- 760/4	- 30/200	- 760/14
- 30/15	- 760/1	- 30/100	- 760/7	- 30/300	- 760/21
- 30/30	- 760/2	- 30/150	- 760/10	- 30/350	- 760/25

#### Single Scale (kg/cm<sup>2</sup>)

- 1/0	- 1/1.5	- 1/5	- 1/15
- 1/0.6	- 1/3	- 1/9	- 1/24

### Freon (with temperature scale)

### Ammonia (with temperature scale)

Note : For temperature scales, please provide refrigerant name.

Range (psi)		( kg/cm <sup>2</sup> )	( psi )
-30 inHg - 150	0-300	-1to12.5	-30 inHg - 150
-30 inHg - 300	0-500	-1to16	-30 inHg - 300
		-1to25	0 - 300

### Accessories (refer datasheet for complete specifications)

<b>CT</b> Cooling tower	<b>GS</b> Over load protector (gauge saver)**	<b>SN</b> Snubber
<b>GC</b> Gauge cock	* Needle valve	<b>SP</b> Siphon

\* Refer catalogue for Valves & Manifolds.

\*\* For Pressure Ranges.

**Note : For Any Non Standard or Special Scale Marking Consult Factory**