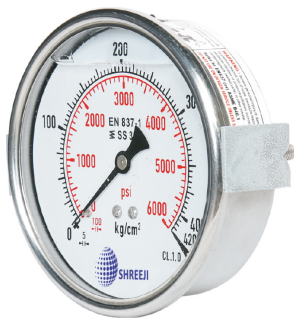


SPG6

Economical (SS Case / Brass Internal) Pressur
Bourdon type (Glycerin Filled)



Bottom Connection



Back Connection
With 'C' Bracket

Special Features

- Stainless steel case & measuring system Copper Alloy (Brass)
- Socket directly welded to case
- Liquid filled version
- Standard followed EN 837-1

Application

- Pumps
- Diesel engines & Refrigerating plants
- Chemical & Petrochemical industries
- Environments & gaseous or liquid media that will not obstruct the pressure system.
- Hydro-cleaning machines
- Presses
- Engine compressors

Specifications

Standard Version : 100 mm

Accuracy	:	±1.6% of F. S.
Ambient temperature	:	- 25°C to + 65°C
Process temperature	:	Max 300°C
Operating pressure range	:	75% of Scale Value
Over pressure limit	:	< 100 bar : 125% of Max. Scale Value
	:	> 100 to < 600 bar : 115% of Max. Scale Value
	:	> 600 to < 700 bar : 110% of Max. Scale Value

Case & Bezel	:	AISI 304 SS (Crimp Type Bezel for NS 100 & Bayonet Bezel for NS 150)
Bourdon	:	Copper Alloy (PB or Brass)
Socket	:	Brass (Two Part System)
Movement	:	Brass Plated (Optional SS 304)
Joints	:	Soldering / Silver Brazing

Protection	:	IP 68
Dial	:	Aluminium, black graduation on white background
Pointer	:	Aluminium, black coloured
Window	:	Crystal Clear Acrylic / Plexi Glass for NS 100 & Sheet Glass For NS 150
Gasket & Filling Plug	:	Neoprene

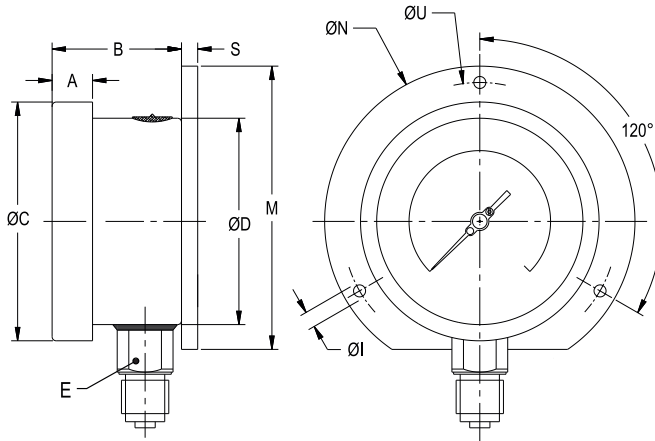
Dampening Liquids	:	Glycerine 99.7%
Ambient Temperature	:	Maximum 65°C
Process Temperature	:	Maximum 100°C

Temperature effect:

The variation of indication caused by effects of temperature is to be calculated by below formula; which is to be added in the specified accuracy while measurement :- Formula : $\pm 0.04 \times (t_2 - t_1) \% \text{ of F. S.}$ where t_1 = reference temperature (+20°C) and t_2 = ambient temperature in °C.

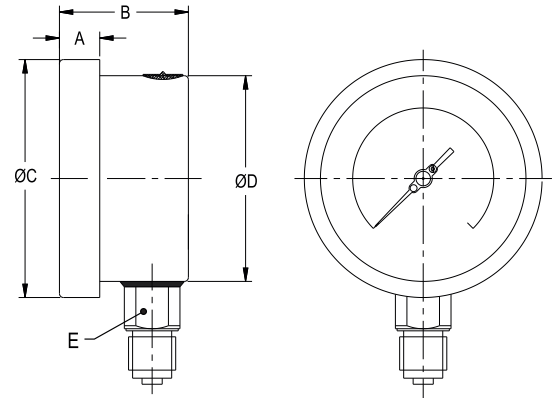
Dimensions - Standard Version

TYPE 1



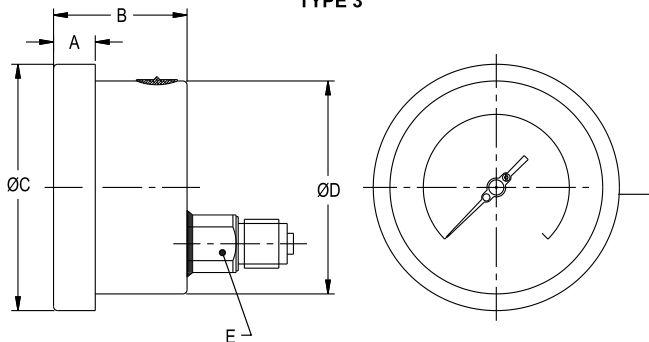
NS	A	B	ØC	ØD	E	M	S	ØI	ØN	ØU	Weight in gram (With Box)	Weight in gram (With Glycerin & Box)
100	6.5	35	111	100	17	128	5	6	134	118	450.0	650.00
150	15	40	161	149	17	174.5	5	6	186	168	850.0	1250.00

TYPE 2



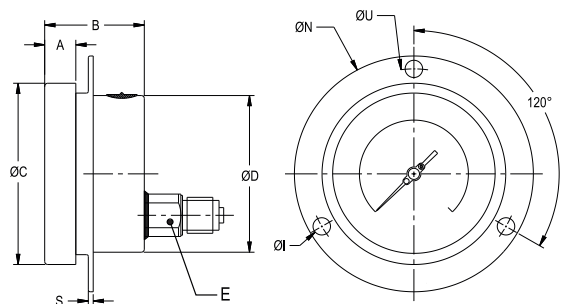
NS	A	B	ØC	ØD	E	Weight in gram (With Box)	Weight in gram (With Glycerin & Box)
100	6.5	35	111	100	17	430.00	630.00
150	15	40	161	149	17	800.00	1400.00

TYPE 3



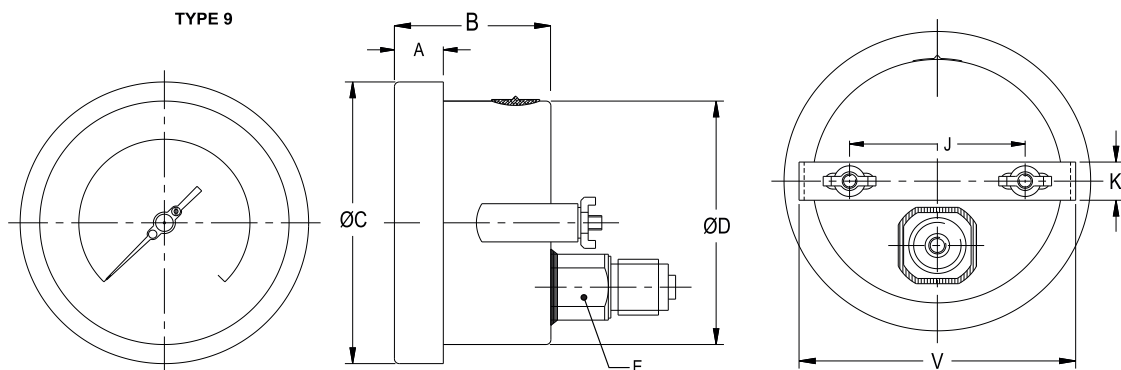
NS	A	B	ØC	ØD	E	Weight in gram (With Box)	Weight in gram (With Glycerin & Box)
100	12.5	35	111	100	17	430.00	630.00
150	15	40	161	149	17	800.00	1200.00

TYPE 5



NS	A	B	ØC	ØD	E	S	ØI	ØN	ØU	Weight in gram (With Box)	Weight in gram (With Glycerin & Box)
100	12.5	35	111	100	17	1	6	134	118	450.00	650.00
150	15	40	161	149	17	1	6	186	168	850.00	1250.00

TYPE 9



NS	A	B	ØC	ØD	E	J	K	V	Weight in gram (With Box)	Weight in gram (With Glycerin & Box)
100	12.5	35	111	100	17	62	16	108	450.00	650.00
150	15	40	161	149	17	100	16	166	850.00	1250.00

Range Table

Note : We offer National / International Scales like kPa, MPa, bar, psi, kg/cm² & Dual Scale like kPa with psi, kPa with bar, bar with psi or Equivalent scales as per the requirement can be provided on request. Following are the example tables for kg/cm² & psi scales.

Pressure

Single Scale (kg/cm² or bar)

0/1	0/6	0/25	0/160
0/1.6	0/7	0/40	0/250
0/2.5	0/10	0/60	0/400
0/4	0/16	0/100	0/600

Dual Scale (psi with kg/cm²)

psi	kg/cm ²	psi	kg/cm ²	psi	kg/cm ²
0/15	0/1	0/400	0/28	0/4000	0/280
0/30	0/2	0/500	0/35	0/5000	0/350
0/60	0/4	0/600	0/40	0/6000	0/420
0/100	0/7	0/1000	0/70	0/10000	0/700
0/150	0/10	0/1500	0/100		
0/230	0/16	0/2300	0/160		
0/300	0/20	0/3000	0/200		

Vacuum & Compound

Dual Scale (inHg with psi & mmHg with kg/cm²)

inHg with psi	mmHg with kg/cm ²	inHg with psi	mmHg with kg/cm ²	inHg with psi	mmHg with kg/cm ²
- 30/0	- 760/0	- 30/60	- 760/4	- 30/200	- 760/14
- 30/15	- 760/1	- 30/100	- 760/7	- 30/300	- 760/21
- 30/30	- 760/2	- 30/150	- 760/10	- 30/350	- 760/25

Single Scale (kg/cm²)

- 1/0	- 1/1.5	- 1/5	- 1/15
- 1/0.6	- 1/3	- 1/9	- 1/24

Freon (with temperature scale)

Ammonia (with temperature scale)

Note : For temperature scales, please provide refrigerant name.

Range (psi)		(kg/cm ²)	(psi)
-30 inHg - 150	0-300	-1to12.5	-30 inHg - 150
-30 inHg - 300	0-500	-1to16	-30 inHg - 300
		-1to25	0 - 300

Accessories (refer datasheet for complete specifications)

CT Cooling tower	GS Over load protector (gauge saver)**	SN Snubber
GC Gauge cock	* Needle valve	SP Siphon

* Refer catalogue for Valves & Manifolds.

** For Pressure Ranges Only.

Note : For Any Non Standard or Special Scale Marking Consult Factory