

SPG4

SS Case Internal Brass Glycerin Filled Pressure Gauge
Bourdon type (Two Part Connection System)



Special Features

- Stainless steel case & Brass measuring system
- Rugged construction
- liquid filled as Standard (Dry Case Optional)
- Standard followed in general EN 837-1

Application

- Engine compressors
- Diesel engines
- Equipments
- Pumps
- Hydraulic
- Hydro-cleaning machines
- Refrigerating plants and gaseous / liquid media that will not obstruct the pressure system.

Specifications

Standard Version : 40mm, 50 mm, 63 mm & 80 mm

Accuracy	:	± 1.6% of F.S.
Ambient temperature	:	- 25°C to + 65°C
Process temperature	:	Max 180°C Without Glycerin Filled if Glycerin Filled Max Temperature 100°C
Operating pressure	:	75 % of Scale Value
Over pressure limit	:	≤ 100 bar : 125% of Max. Scale Value > 100 to ≤ 600 bar : 115% of Max. Scale Value

Case & Bezel	:	AISI 304 SS Crimped Bezel
Socket	:	BRASS
Bourdon	:	BRASS Upto 35 Bar & Above SS 316L
Movement	:	Brass Plated
Joints	:	Brass to Brass Soft Solder & SS to Brass Silver Brazing

Protection	:	IP 68
Dial	:	Aluminium, black graduation on white background
Pointer	:	Black Coloured, Fixed
Window	:	Plexi Glass
Filling Plug	:	Neoprene
Gasket	:	Neoprene / Silicon rubber

Dampening Liquids	:	Glycerin 99.7%
Ambient Temperature	:	Maximum 65°C
Process Temperature	:	Maximum 100°C

Dry but fillable version (option DFG)

Fillable Dampening Liquid	:	Glycerin 99.7%
Ambient Temperature	:	(-) to 65°C
Process Temperature	:	Maximum 65°C
Other Features	:	Refer Specification of Standard Version

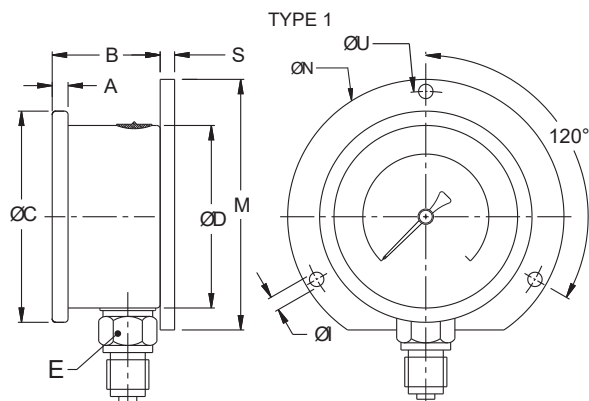
Temperature effect:

The variation of indication caused by effects of temperature is to be calculated by below formula; which is to be added in the specified accuracy while measurement :- Formula : $\pm 0.04 \times (t_2 - t_1) \% \text{ of F. S.}$ where t_1 = reference temperature (+20°C) and t_2 = ambient temperature in °C.

SPG4

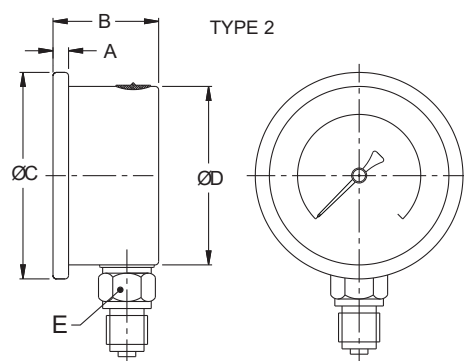
SS Case Internal Brass Glycerin Filled Pressure Gauge
Bourdon type (Two Part Connection System)

Dimensions - standard version



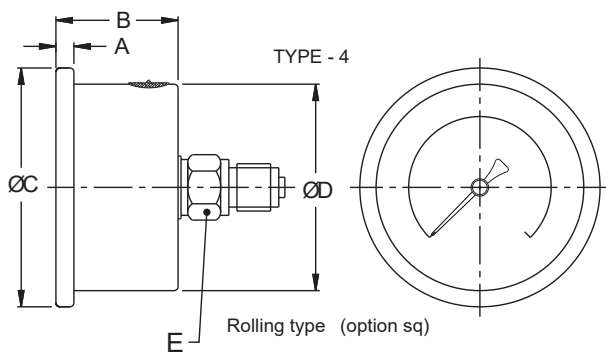
Crimped T type Bezel (Standard)

NS	A	B	ØC	ØD	E	S	ØN	ØI	ØU	M	Weight in gram (With Box)	Weight in gram (With Glycerin & Box)
63	6.5	30.5	69	62.5	A/F 14	7	86	3.6	75	80	190.0	250.0



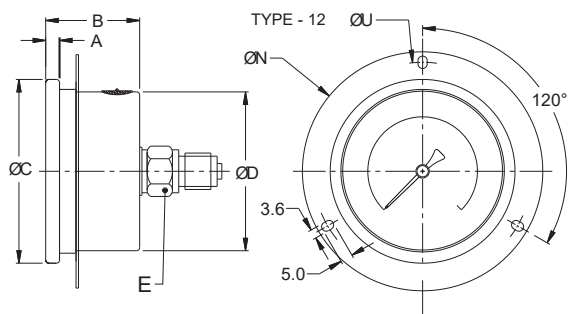
Rolling T type (option Sq)

NS	A	B	ØC	ØD	E	Weight in gram (With Box)	Weight in gram (With Glycerin & Box)
40*	5	26.5	49.0	41.6	A/F 12	90.0	130.0
50	5	29	57.5	51.5	A/F 14	125.0	185.0
63	6.5	30.5	69	62.5	A/F 14	140.0	200.0



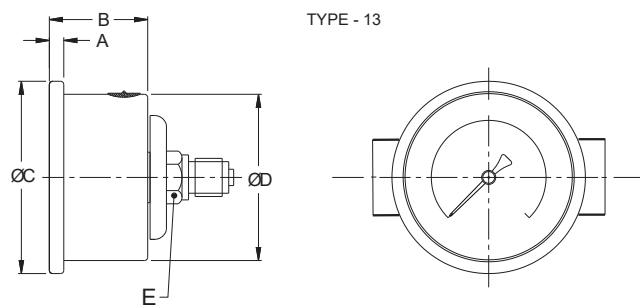
Rolling type (option sq)

NS	A	B	ØC	ØD	E	Weight in gram (With Box)	Weight in gram (With Glycerin & Box)
40	5	26.5	40.0	41.6	A/F 12	100.0	140.0
50	4.5	29	57.5	51.5	A/F 14	117.0	167.0
63	6.5	30.5	69	62.5	A/F 14	170.0	230.0



Rolling type (option sq)

NS	A	B	ØC	ØD	E	ØN	ØU	Weight in gram (With Box)	Weight in gram (With Glycerin & Box)
63	6.5	30.5	69	62.5	A/F 14	86	75	220.0	280.0



Rolling type (standard)

NS	A	B	ØC	ØD	E	Weight in gram (With Box)	Weight in gram (With Glycerin & Box)
50	5	29	57	51.5	A/F 14	180.0	240.0
63	6.5	30.5	69	62.5	A/F 14	210.0	270.0

Notes : • Drawings are not to scale. • All Dimensions are in mm . • NS = Nominal size
• Weights mentioned are approximate and for standard product. Weight can be different after selection of options.