

SPG3

All SS Pressure Gauge
Bourdon type (Two Part Connection System)



Special Features

- Stainless steel case & measuring system
- Rugged construction
- Dry or liquid filled
- Standard followed in general EN 837-1

Application

- Food & beverage
- Engine compressors
- Diesel engines
- Equipments
- Nuclear power plants
- Pharmaceutical
- Turbines
- Hydraulic
- Petrochemical industries
- Hydro-cleaning machines
- Refrigerating plants and gaseous / liquid media that will not obstruct the pressure system.
- Pumps
- Chemical
- Conventional
- Presses

Specifications

Standard Version : 40mm, 50 mm, 63 mm & 80 mm

Accuracy	:	± 1.6% of F.S.
Ambient temperature	:	- 25°C to + 65°C
Process temperature	:	Max 180°C
Operating pressure	:	75 % of Scale Value
Over pressure limit	:	≤ 100 bar : 125% of Max. Scale Value
	:	> 100 to ≤ 600 bar : 115% of Max. Scale Value
	:	> 600 to ≤ 1600 bar : 110% of Max. Scale Value

Case & Bezel	:	AISI 304 SS (Crimped Bezel) / Optional Bayonet Bezel For NS 63 & 83mm(Option : SAB)
Socket	:	AISI 316 SS
Bourdon	:	AISI 316L SS
Movement	:	AISI 304 SS
Joints	:	Tig Argon Arc Welding

Protection	:	IP 68
Dial	:	Aluminium, black graduation on white background
Pointer	:	Black Coloured, Fixed
Window	:	Plexi Glass / Toughened Glass for Option SAB
Filling Plug	:	Neoprene
Gasket	:	Neoprene

Dry but fillable version

Fillable Dampening Liquid	:	Glycerine 99.7%
Ambient Temperature	:	(-) to 65°C
Process Temperature	:	Maximum 100°C
Other Features	:	Refer Specification of Standard Version

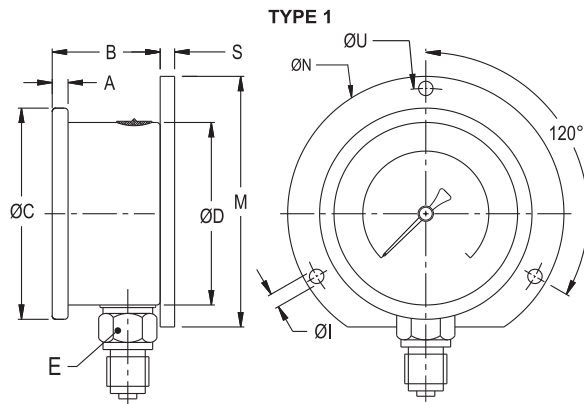
Glycerine filled version

Accuracy	:	±1.6% of F. S.
Ambient Temperature	:	Maximum
Process Temperature	:	Maximum 100°C
Window	:	Plexi Glass / Toughened Glass for Option SAB
Dampening Liquids	:	Glycerine 99.7%
Other Features	:	Refer Specification of Standard Version

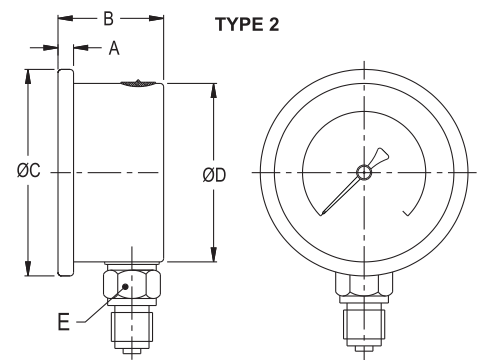
Temperature effect:

The variation of indication caused by effects of temperature is to be calculated by below formula; which is to be added in the specified accuracy while measurement :- Formula : $\pm 0.04 \times (t_2 - t_1) \% \text{ of F. S.}$ where t_1 = reference temperature (+20°C) and t_2 = ambient temperature in °C.

Dimensions - standard version (Crimped / Rolling Bezel)

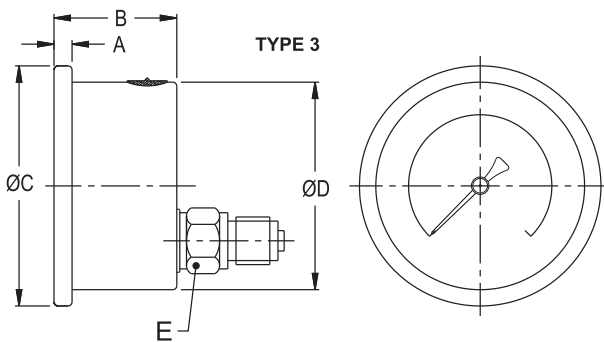


NS	A	B	ØC	ØD	E	S	ØN	ØI	ØU	M	Weight in gram (With Box)	Weight in gram (With Glycerin & Box)
63	6.5	30.5	69	62.5	A/F 14	7	86	3.6	75	80	190.0	250.0

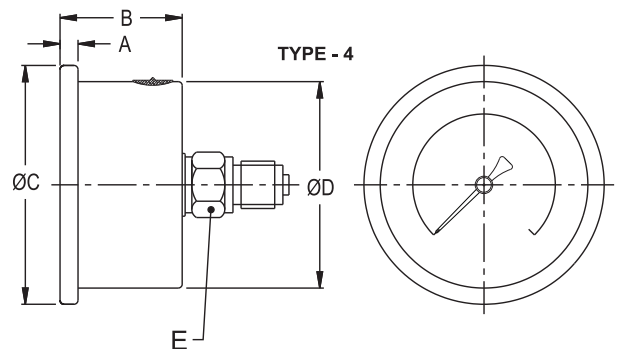


NS	A	B	ØC	ØD	E	Weight in gram (With Box)	Weight in gram (With Glycerin & Box)
40*	5	29	45.5	41	A/F 14	90.0	130.0
50	5	29	57.5	51.5	A/F 14	125.0	185.0
63	6.5	30.5	69	62.5	A/F 14	140.0	200.0

* Push Fit type (standard)

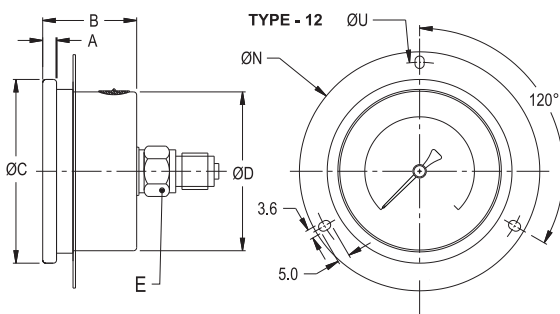


NS	A	B	ØC	ØD	E	Weight in gram (With Box)	Weight in gram (With Glycerin & Box)
63	6.5	30.5	69	62.5	A/F 14	160.0	220.0

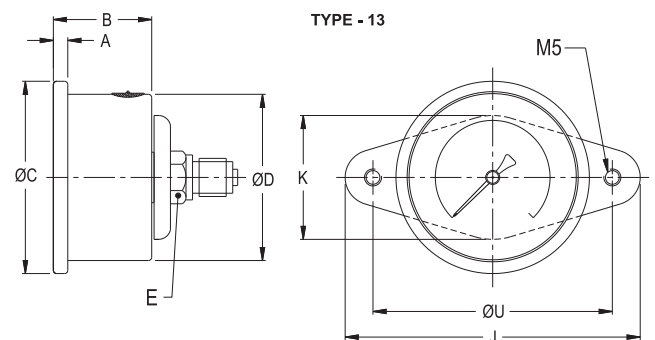


NS	A	B	ØC	ØD	E	Weight in gram (With Box)	Weight in gram (With Glycerin & Box)
40*	5	29	45.5	41	A/F 14	100.0	140.0
50	4.5	29	57.5	51.5	A/F 14	117.0	167.0
63	6.5	30.5	69	62.5	A/F 14	170.0	230.0

* Rolling type (standard)



NS	A	B	ØC	ØD	E	ØN	ØU	Weight in gram (With Box)	Weight in gram (With Glycerin & Box)
63	6.5	30.5	69	62.5	A/F 14	86	75	220.0	280.0

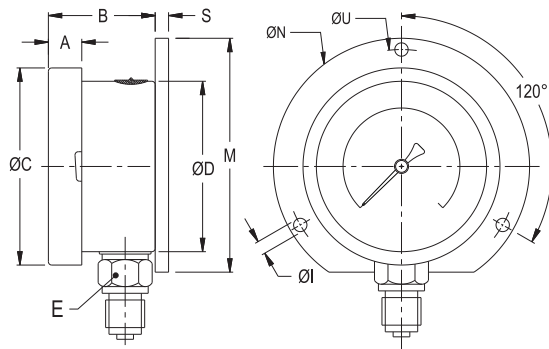


NS	A	B	ØC	ØD	E	J	K	ØU	Weight in gram (With Box)	Weight in gram (With Glycerin & Box)
50	5	29	57	51.5	A/F 14	91	38	70.5	180.0	240.0
63	6.5	30.5	69	62.5	A/F 14	91	38	70.5	210.0	270.0

Notes : • Drawings are not to scale. • All Dimensions are in mm . • NS = Nominal size
• Weights mentioned are approximate and for standard product. Weight can be different after selection of options.

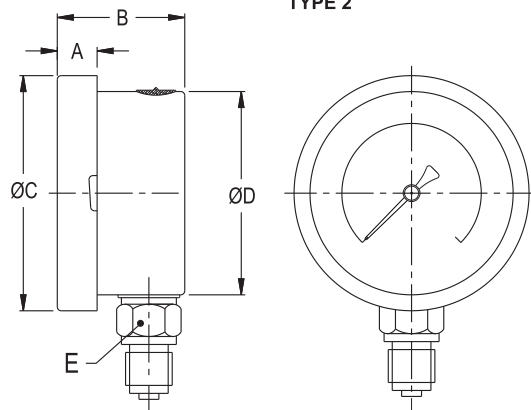
Dimensions - Optional version With Option SAB (Snap Action Bayonet type bezel)

TYPE 1



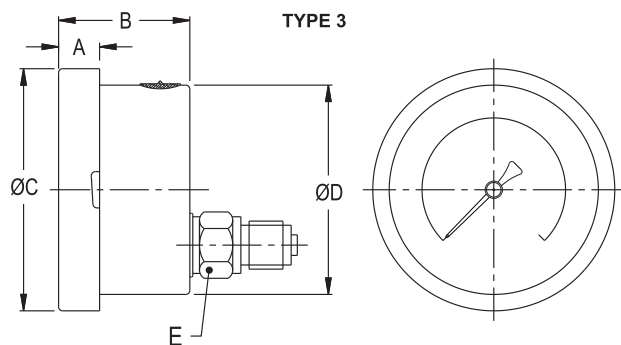
NS	A	B	ØC	ØD	E	S	ØN	ØI	ØU	M	Weight in gram (With Box)	Weight in gram (With Glycerin & Box)
63	12	32	70	63	A/F 14	1	86	3.5	75	80	215.0	265.0
80	12	35	90	80	A/F 14	1	110	5	94	95	300.0	380.0

TYPE 2



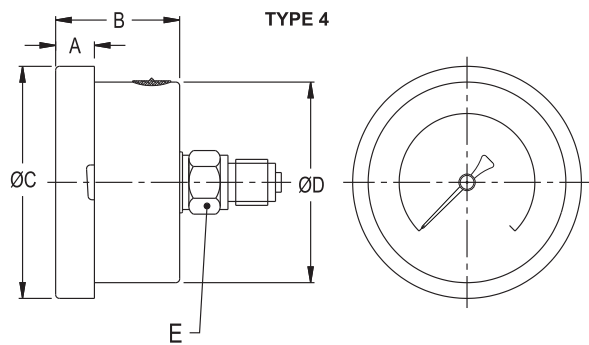
NS	A	B	ØC	ØD	E	Weight in gram (With Box)	Weight in gram (With Glycerin & Box)
63	12	32	70	63	A/F 14	180.0	240.0
80	12	35	90	80	A/F 14	250.0	330.0

TYPE 3



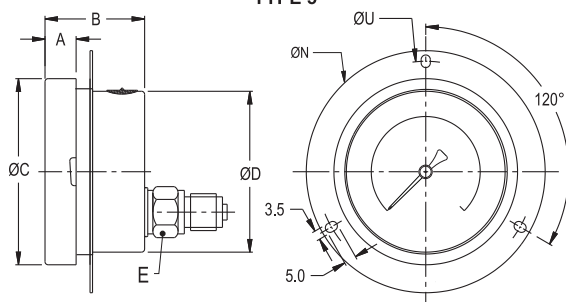
NS	A	B	ØC	ØD	E	Weight in gram (With Box)	Weight in gram (With Glycerin & Box)
63	12	32	70	63	A/F 14	190.0	250.0

TYPE 4



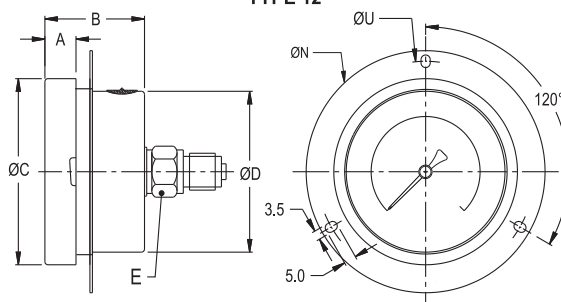
NS	A	B	ØC	ØD	E	Weight in gram (With Box)	Weight in gram (With Glycerin & Box)
63	12	32	70	63	A/F 14	188.0	250.0
80	12	35	90	80	A/F 14	240.0	320.0

TYPE 5



NS	A	B	ØC	ØD	E	ØN	ØU	Weight in gram (With Box)	Weight in gram (With Glycerin & Box)
63	12	32	70	63	A/F 14	86	75	213.0	275.0

TYPE 12



NS	A	B	ØC	ØD	E	ØN	ØU	Weight in gram (With Box)	Weight in gram (With Glycerin & Box)
63	12	32	70	63	A/F 14	86	75	213.0	275.0
50	12	32	59	52	A/F 14	76	65	200.0	250.0

Range Table

Note : We offer Pressure ranges, Vacuum ranges and Compound ranges in Scales like kPa, MPa, bar, psi, kg/cm² & Dual Scale like kPa with psi, kPa with bar, bar with psi or scales as per the requirement can be provided on request. Following are the example tables for kg/cm² & psi scales.

Range with nominal sizes

Nominal size

Range (psi with kg/cm ²)		40 mm	50 mm	63 mm	80 mm
psi	kg/cm ²				
-30 inHg / 0	-760 mmHg / 0	✓	✓	✓	✓
0/15 psi	0/1 kg/cm ²	✓	✓	✓	✓
0/30 psi	0/2 kg/cm ²	✓	✓	✓	✓
0/60 psi	0/4 kg/cm ²	✓	✓	✓	✓
0/100 psi	0/7 kg/cm ²	✓	✓	✓	✓
0/150 psi	0/10 kg/cm ²	✓	✓	✓	✓
0/230 psi	0/16 kg/cm ²	✓	✓	✓	✓
0/300 psi	0/20 kg/cm ²	✓	✓	✓	✓
0/400 psi	0/28 kg/cm ²	✓	✓	✓	✓
0/500 psi	0/35 kg/cm ²	✓	✓	✓	✓
0/600 psi	0/42 kg/cm ²	✓	✓	✓	✓
0/1000 psi	0/70 kg/cm ²	✓	✓	✓	✓
0/1500 psi	0/100 kg/cm ²	✓	✓	✓	✓
0/2300 psi	0/160 kg/cm ²	✓	✓	✓	✓
0/3000 psi	0/200 kg/cm ²	✓	✓	✓	✓
0/4000 psi	0/280 kg/cm ²	✓	✓	✓	✓
0/5000 psi	0/350 kg/cm ²	✓	✓	✓	✓
0/6000 psi	0/400 kg/cm ²	✓	✓	✓	✓
0/10000 psi	0/700 kg/cm ²	×	✓	✓	✓
0/15000 psi	0/1000 kg/cm ²	×	×	✓	✓
- 30inHg /30	- 1/2 kg/cm ²	×	✓	✓	✓
- 30inHg /60	- 1/4 kg/cm ²	×	✓	✓	✓
- 30inHg /100	- 1/7 kg/cm ²	×	✓	✓	✓
- 30inHg /150	- 1/10 kg/cm ²	×	✓	✓	✓
- 30inHg /200	- 1/14 kg/cm ²	×	✓	✓	✓
- 30inHg /300	- 1/21 kg/cm ²	×	✓	✓	✓

Ammonia with temperature scale

- 30" Hg / 150 psi	×	×	✓	✓
- 30" Hg / 300 psi	×	×	✓	✓
0/300 psi	×	×	✓	✓
-112.5 kg/cm ²	×	×	✓	✓
-1/16 kg/cm ²	×	×	✓	✓
-1/25 kg/cm ²	×	×	✓	✓

Accessories (refer datasheet for complete specifications)

GC	Gauge cock	SN	Snubber
GS	Overload protector (gauge saver)**	SP	Siphon
*	Needle valve	CT	Cooling tower

* Refer catalogue for Valves & Manifolds

** For Pressure Ranges Only.